

White flowers form clusters of 5-10.



Photo by Heidi Bohan

This deciduous tree can grow up to 45' tall, singly or in stands.



Photo by Heidi Bohan



Photo by Heidi Bohan

Leaves are oval and finely toothed. They are usually rounded at the tip and finely hairy.

Bark is shiny purple to reddish-brown or grey with pronounced horizontal lines.



Photo by Heidi Bohan

Fruits are small (3/8"), bright red cherries.



Photo by Heidi Bohan

PNW Native Plant  
PPNC: 48

### Bitter Cherry *Prunus emarginata*



© Starflower Foundation 2006

Tree

Shrub

Ground cover

Forbs/ Grass

Forest

Prairie Meadow

Wetland Riparian

White flowers form clusters of 5-10.



Photo by Heidi Bohan

This deciduous tree can grow up to 45' tall, singly or in stands.



Photo by Heidi Bohan



Photo by Heidi Bohan

Leaves are oval and finely toothed. They are usually rounded at the tip and finely hairy.

Bark is shiny purple to reddish-brown or grey with pronounced horizontal lines.

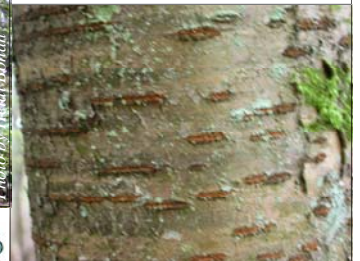


Photo by Heidi Bohan

Fruits are small (3/8"), bright red cherries.



Photo by Heidi Bohan

PNW Native Plant  
PPNC: 48

### Bitter Cherry *Prunus emarginata*



© Starflower Foundation 2006

Tree

Shrub

Ground cover

Forbs/ Grass

Forest

Prairie Meadow

Wetland Riparian